

## Netscape ISP Issues

When using **Netscape's ISP** there are certain features that are included that do not function with **MetroConnect**. Before accessing **MetroConnect** using **Netscape**, it is suggested you complete the following:

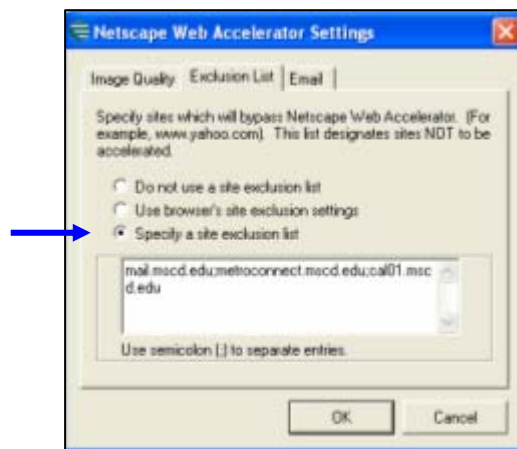
Locate and right-click on the shortcut to **Netscape** on the **Taskbar** located at the bottom of your **Desktop**. The **Netscape** icon is green with white lines.



Choose **Settings** from the drop-down list.



Select the **Exclusion List** tab and click on the radio button to the left of the **Specify a site exclusion list** option.



Enter the following information in the text box:

**mail.mscd.edu;metroconnect.mscd.edu;cal01.mscd.edu**

Click **OK** to exit and return to your **Desktop**.

Right-click on the **Netscape** icon (green with white lines) on the **Taskbar** to again display the drop-down menu. This time choose **Pop-up Blocker** from the list.



In the **Netscape Web Accelerator Pop-up Blocker** dialogue box, click on the **Add** button and then add the **metroconnect.mscd.edu** and **mscd.edu** websites to the **Site or Domain** dialogue box.



This will allow the pop-ups from **mscd.edu** and will also allow you to receive, compose and reply to **MetroConnect** e-mail messages.