



Information Technology

FileZilla User Guide

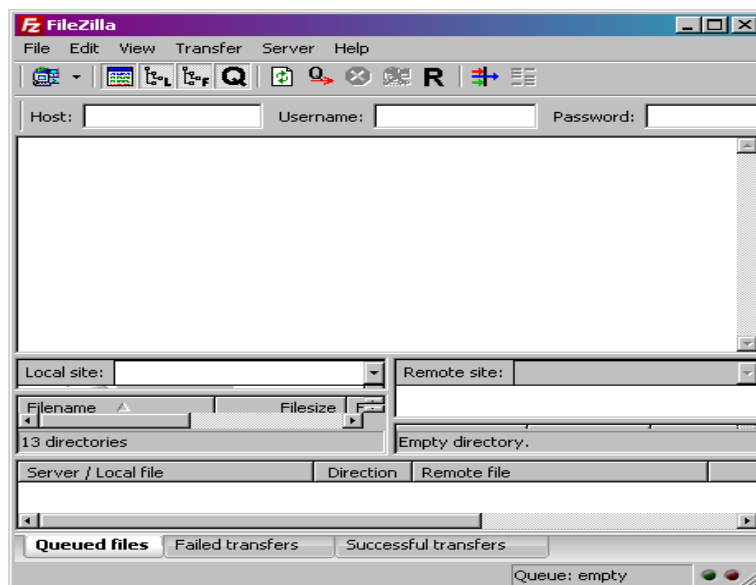
Rowdy

1. Double Click Icon

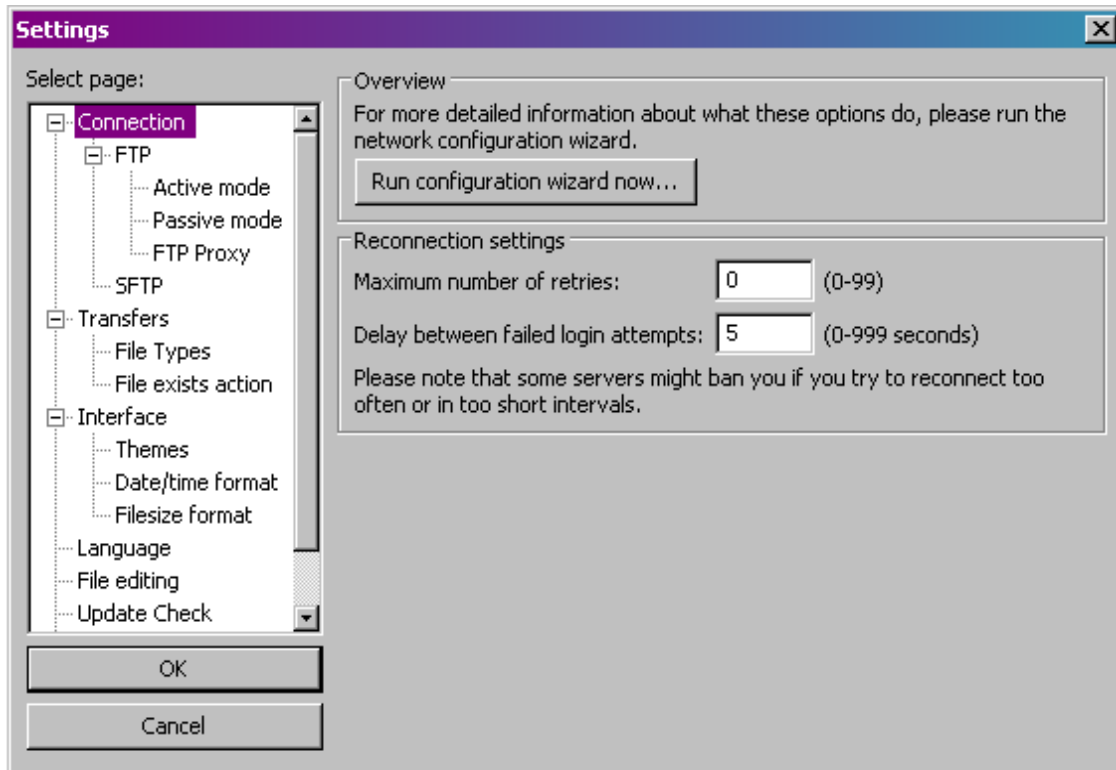


Sign onto Rowdy, SFTP a file to Rowdy, as normal.

1a. The Very First Time, click Edit. DO NOT perform this task every time.



1b Then Click **Settings**, to bring up the following panel

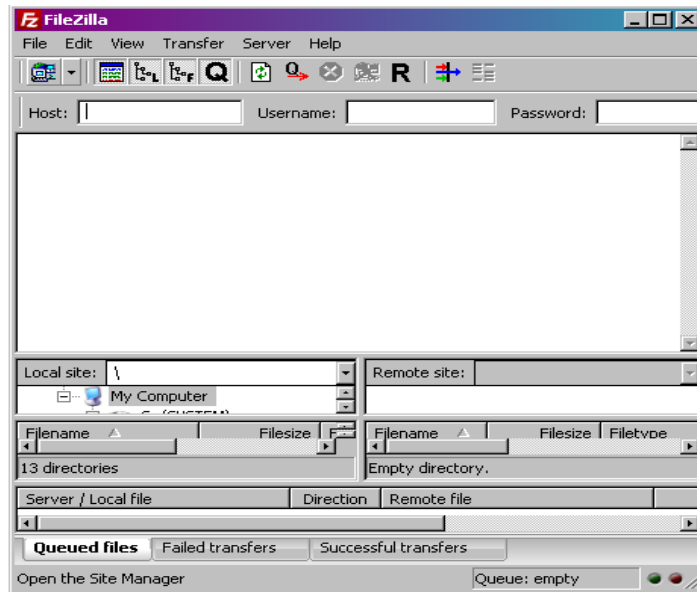


In the **Reconnection settings** box, make sure the Maximum number of retries is set to “0”.

Otherwise, if you forget your password, FileZilla will retry your login 5 times (default), causing your Rowdy account to become disabled.

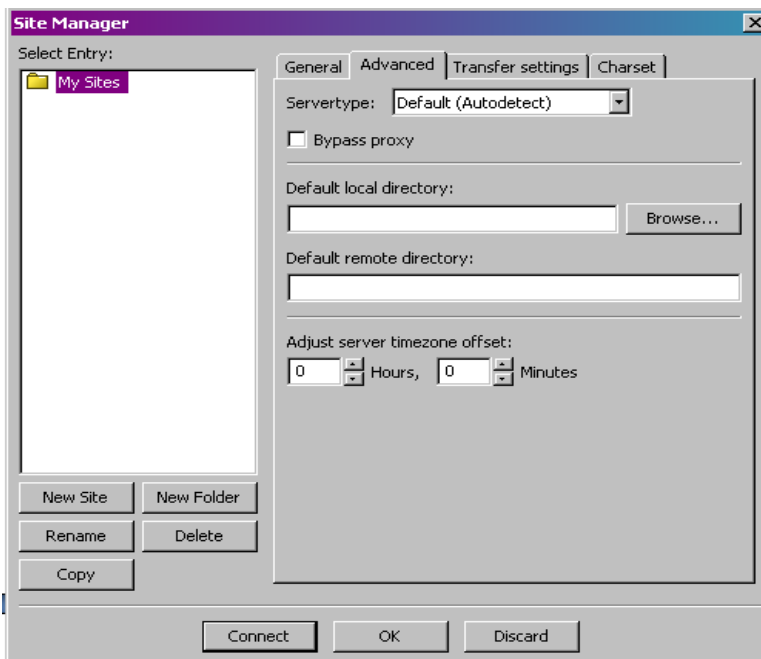
Do all the steps from 2 thru 4 ONCE, to set up the FileZilla session on Rowdy.

2. Click the Site Manager button



3. Click the New Site Button

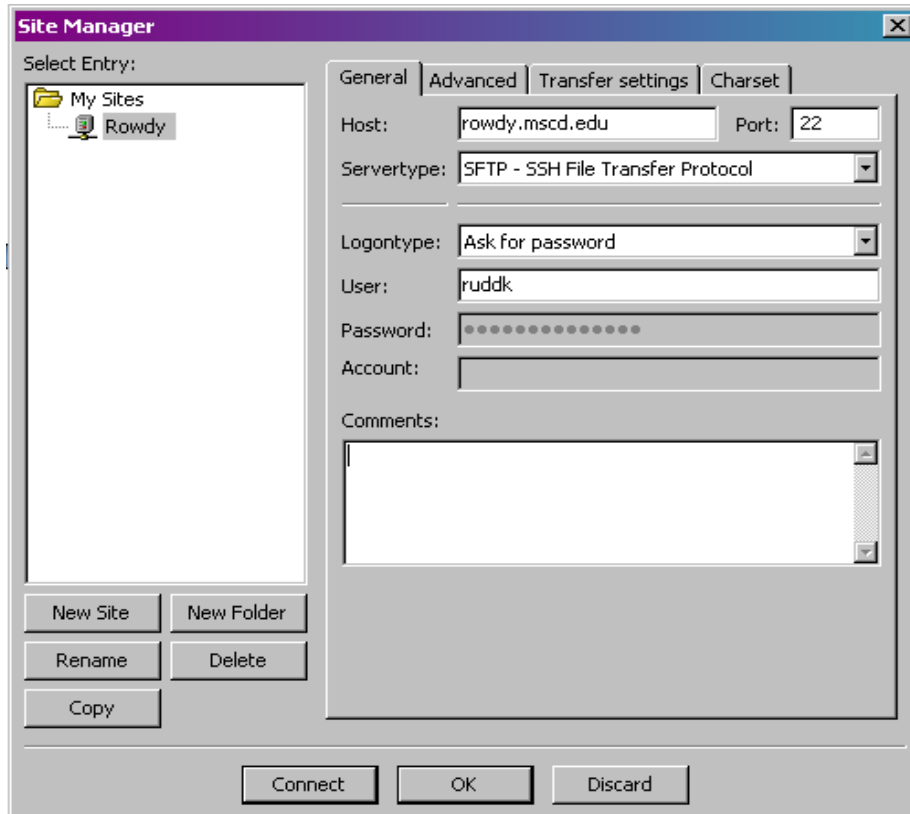
Next, type a descriptive name into the field labeled "New Site", ie **Rowdy**



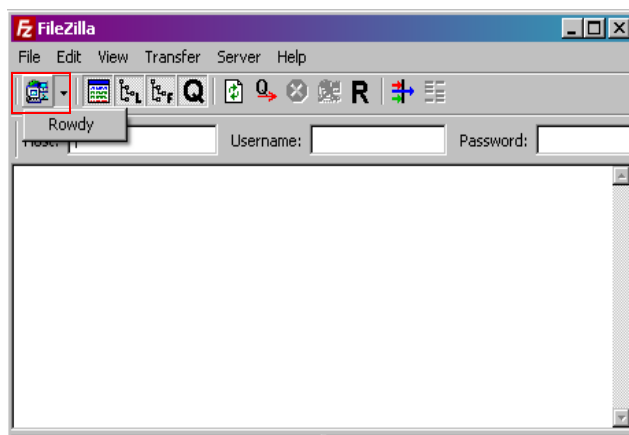


Information Technology

4. Go Host field: type **rowdy.mscd.edu**; Port: **22**
Go to Sertertype field: select **SFTP - SSH File Transfer Protocol** from drop down list
Go to the Logontype field: select **Ask for password** from the drop down list
Enter your **Username**.
Click **OK**



5. Select the site you just created from the Site Manager drop down window and click the Connect button





METROPOLITAN STATE
COLLEGE of DENVER

Information Technology

6. Enter Password, click **OK**

A screenshot of a Windows-style dialog box titled "Enter password". The dialog box has a purple title bar with a close button (X) in the top right corner. The main content area is light gray and contains the following text: "Please enter a password for this server:", "Name: Rowdy", "Host: rowdy.mscd.edu", "User: ruddk", and "Password: " followed by a white text input field. Below the input field is a checked checkbox labeled "Remember password for this session". At the bottom of the dialog box are two buttons: "OK" and "Cancel".

Enter password [X]

Please enter a password for this server:

Name: Rowdy

Host: rowdy.mscd.edu

User: ruddk

Password: []

Remember password for this session

OK Cancel



METROPOLITAN STATE
COLLEGE of DENVER

Information Technology

You are now logged in to the site.

The screenshot shows the FileZilla interface with the following details:

- Host:** rowdy.mscd.edu
- Username:** ruddk
- Pass:** *****
- Status:** Connected to rowdy.mscd.edu
- Command:** pwd
- Response:** Current directory is: "/admin/ruddk/"
- Command:** ls
- Status:** Listing directory /admin/ruddk
- Response:** 1248363558
- Status:** Directory listing successful

Local site:	Remote site:
My Computer	/admin/ruddk

Filename	Filesize	Filetype	Last modified	Permissions	Owner / Gr...
..		File Folder	7/23/2009 9:39...	drwxr-xr-x	ruddk:ruddk
mozilla		File Folder	7/23/2009 9:39...	drwxr-xr-x	ruddk:ruddk
bin		File Folder	7/23/2009 9:39...	drwxr-xr-x	ruddk:ruddk
public_html		File Folder	7/23/2009 9:39...	drwxr-xr-x	ruddk:ruddk
.bash_hi...	67	BASH_HIST...	7/23/2009 4:00...	-rw-r--r--	ruddk:ruddk
.bash_lo...	33	BASH_LOG...	7/23/2009 9:39...	-rw-r--r--	ruddk:ruddk
.bash_pr...	178	BASH_PRO...	7/23/2009 9:39...	-rw-r--r--	ruddk:ruddk
.bashrc	124	BASHRC File	7/23/2009 9:39...	-rw-r--r--	ruddk:ruddk
.emacs	515	EMACS File	7/23/2009 9:39...	-rw-r--r--	ruddk:ruddk
.zshrc	658	ZSHRC File	7/23/2009 9:39...	-rw-r--r--	ruddk:ruddk

13 directories | 6 files and 3 directories. Total size: 1,575 bytes

Queued files: Failed transfers | Successful transfers | Queue: empty



METROPOLITAN STATE
COLLEGE of DENVER

Information Technology

7. Change to your desired directory.

The screenshot shows the FileZilla interface with the following components:

- Command Log:** Shows a sequence of commands and responses: `cd /admin`, `ls`, `cd /`, and `ls`. The responses indicate successful directory listings and changes.
- Local site:** Displays a tree view of the local computer's drives (C:, D:, E:, F:, K:, P:, S:, U:, V:, W:, X:, Y:, Z:).
- Remote site:** Shows a directory listing for the remote location `/`. The listing includes a table of files and folders.

Filename	Filesize	Filetype	Last modified	Permissions	Owner / Gr...
admin		File Folder	7/23/2009 9:39...	drwxr-xr-x	root root
bin		File Folder	7/23/2009 4:02...	drwxr-xr-x	root root
boot		File Folder	7/15/2009 9:41...	drwxr-xr-x	root root
dev		File Folder	7/17/2009 2:51...	drwxr-xr-x	root root
etc		File Folder	7/24/2009 4:03...	drwxr-xr-x	root root
home		File Folder	8/8/2008	drwxr-xr-x	root root
lib		File Folder	7/9/2009 4:50...	drwxr-xr-x	root root
lib64		File Folder	7/14/2009 11:4...	drwxr-xr-x	root root
lost+found		File Folder	7/9/2009 4:36...	drwxr-xr-x	root root
media		File Folder	8/8/2008	drwxr-xr-x	root root
misc		File Folder	7/17/2009 2:51...	drwxr-xr-x	root root
mnt		File Folder	8/8/2008	drwxr-xr-x	root root
net		File Folder	7/17/2009 2:51...	drwxr-xr-x	root root
nsr		File Folder	7/9/2009 11:09...	drwxr-xr-x	root root
opt		File Folder	7/14/2009 9:17...	drwxr-xr-x	root root
proc		File Folder	7/17/2009 8:50...	drwxr-xr-x	root root
root		File Folder	7/20/2009 11:0...	drwxr-xr-x	root root
sbin		File Folder	7/15/2009 4:03...	drwxr-xr-x	root root
selinux		File Folder	7/9/2009 10:37...	drwxr-xr-x	root root

8. Find the files you need Double click, or drag the file names (to the left) to move the files to your workstation's folder.

