

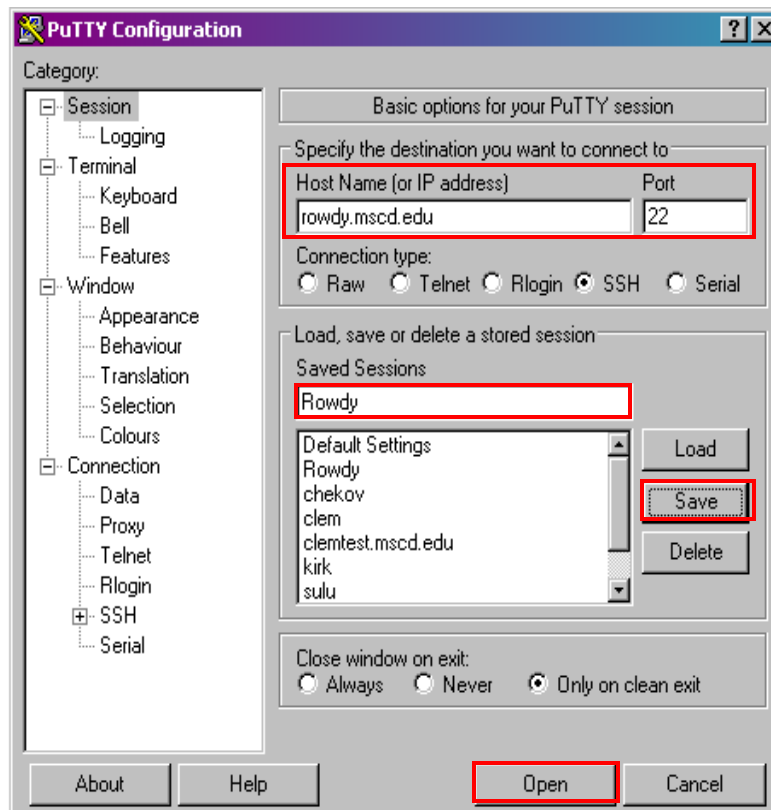
Using PuTTY - Secure Shell Telnet Rowdy

1. Click PuTTY icon



To Set up your PuTTY Session (One-Time)

2. In the box under “Host Name...” enter **rowdy.mscd.edu**
Under Connection type, click **SSH** radio button, the port box will fill in with “22”
In the box under “**Saved Sessions**”, key in **Rowdy**, click “**Save**” button.



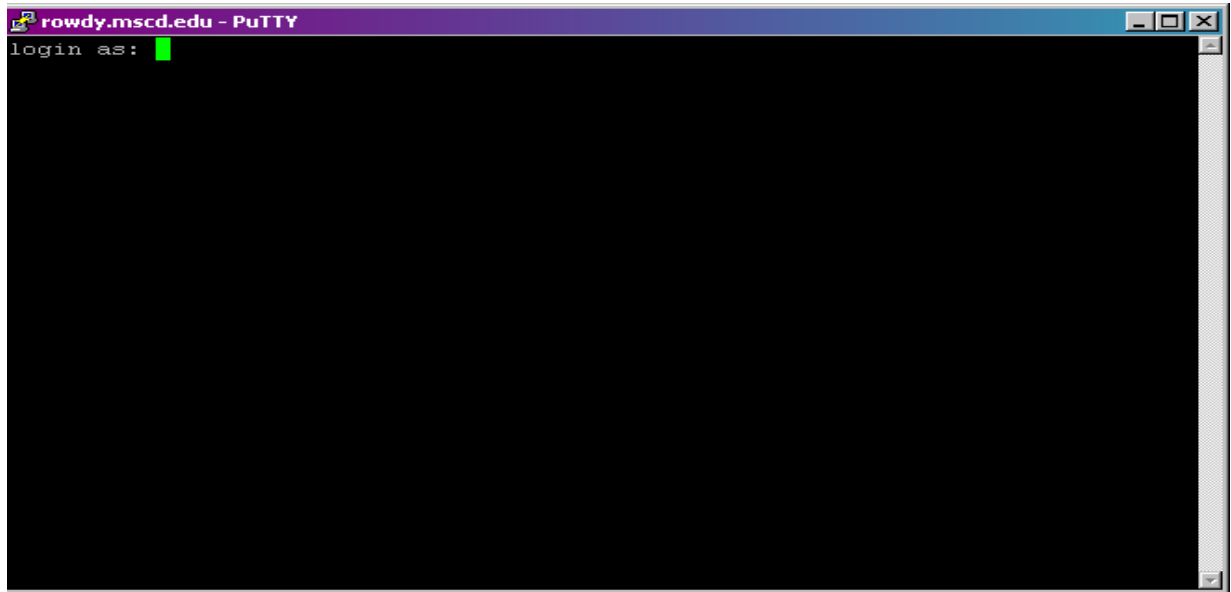
Rowdy session is saved, click “**Open**” button to start a session.



METROPOLITAN STATE
COLLEGE of DENVER

Information Technology

3. PuTTY Session Window



Login to Rowdy with your **username** and **password**.

If no changes to your PuTTY session are required, go to Step 11 to continue your Rowdy processing.

To Change PuTTY Session Options (Do This ONLY the First Time)

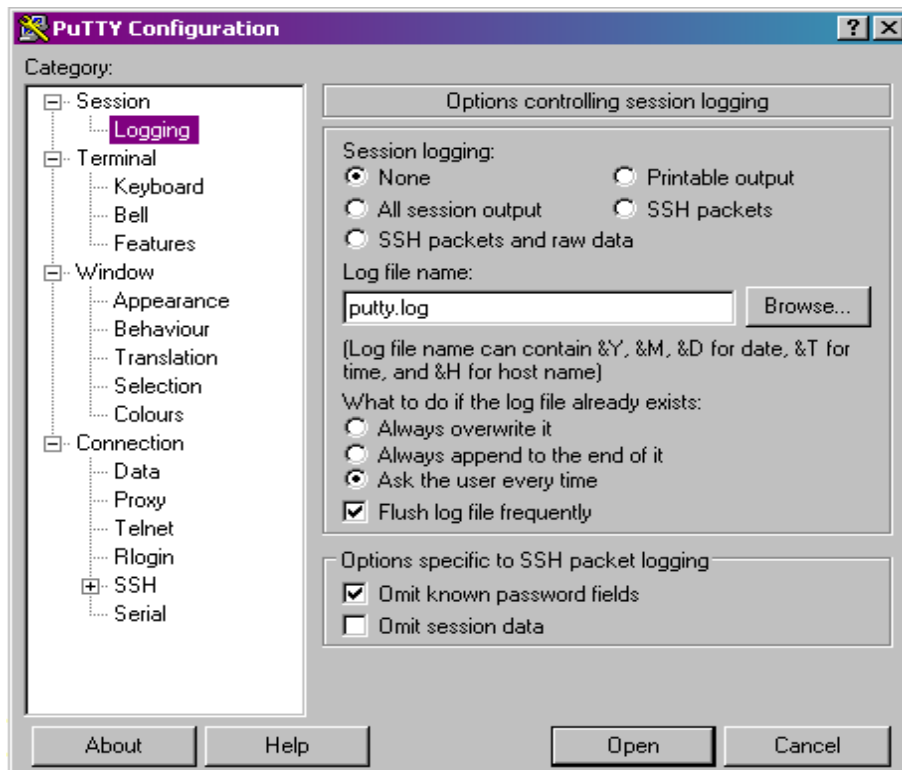
4. Place your cursor on the menu bar of the PuTTY session window (where it says **username@rowdy:~**), right-click and a drop-down menu will appear, click "**Change Settings**" option (two thirds the way down the drop-down menu) to bring up the following panels noted in the next steps..



Information Technology

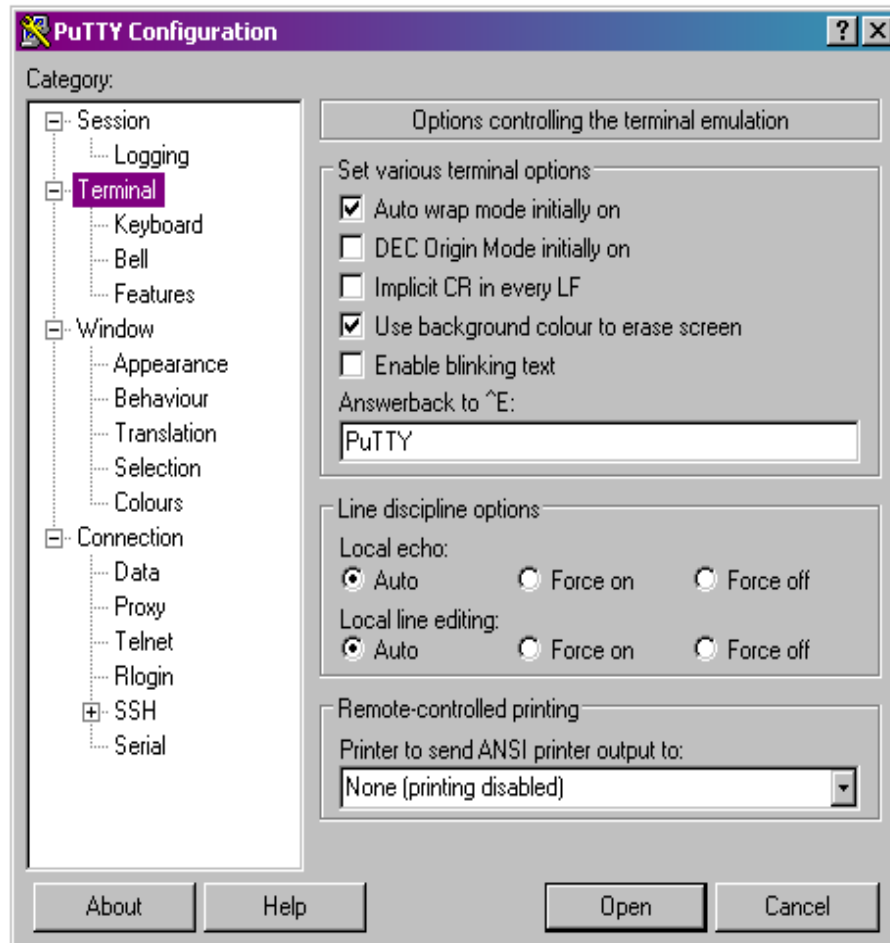
```
ruddk@rowdy:~  
login as: ruddk  
ruddk@rowdy.mscd.edu's password:  
Last login: Thu Jul 23 10:28:31 2009 from 147.153.169.216  
  
Welcome to Rowdy  
Metropolitan State College of Denver, Information Technology  
  
By logging into this system you agree to both the spirit and letter of  
MSCD's appropriate use statement. A copy of this is available in AD475  
Unauthorized access to this system is prohibited  
  
[ruddk@rowdy ~]$ █
```

5. Under Session | Logging
Keep the predefined options



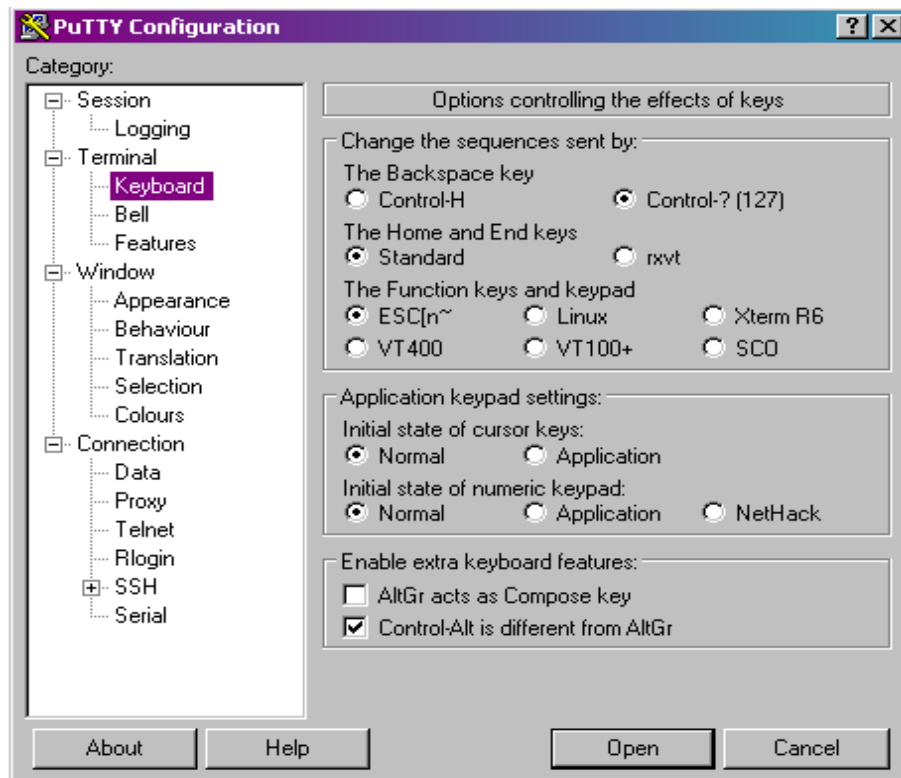
Click “**Terminal**” option in the Left Menu box for the next panel.

6. Terminal Emulation Options
Do not Change



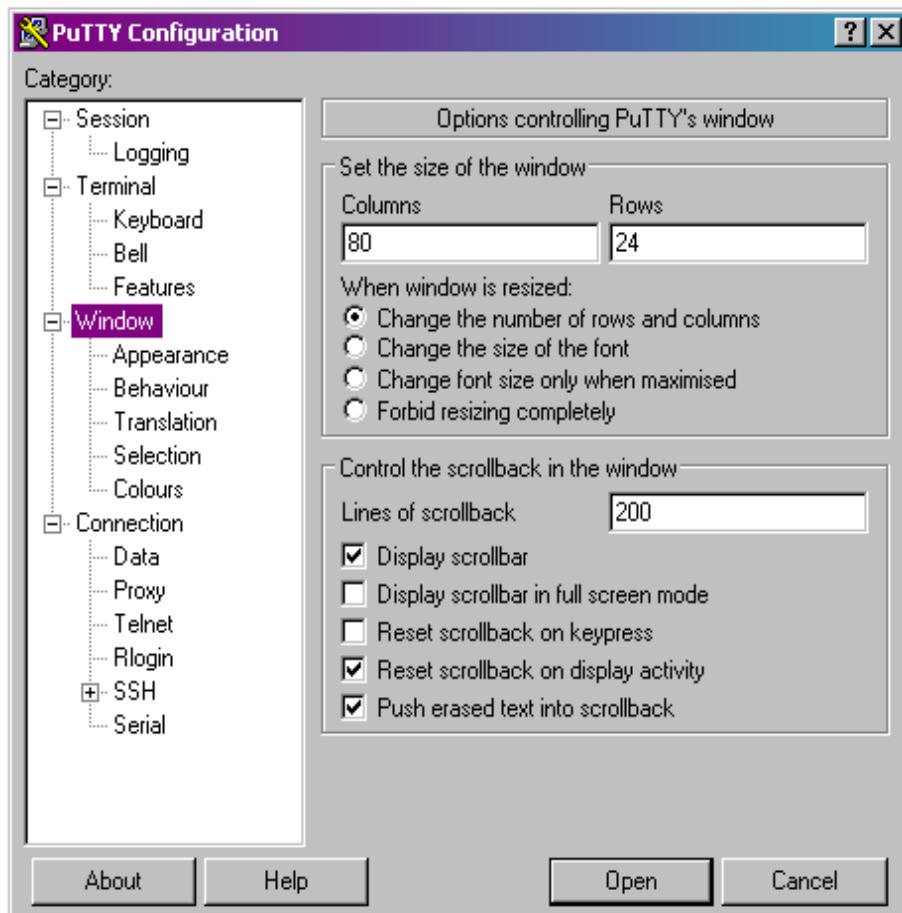
Click on "**Keyboard**" in the Left Menu box for next panel.

7. Terminal Keyboard Options
Use these options



Click on “**Window**” in the Left Menu box option for next panel.

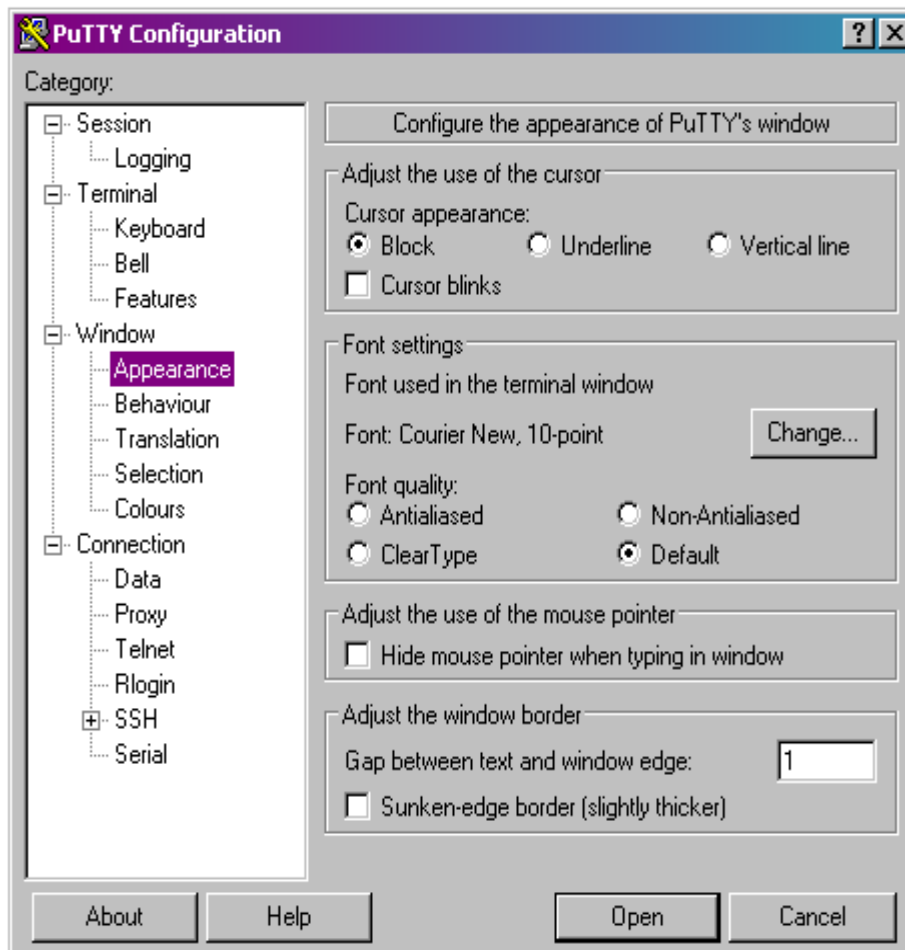
8. **Window Options**
Set the columns and lines to your preference, you can increase lines of scrollback up to 9999 lines



Click on “**Appearance**” in the Left Menu box for next panel.

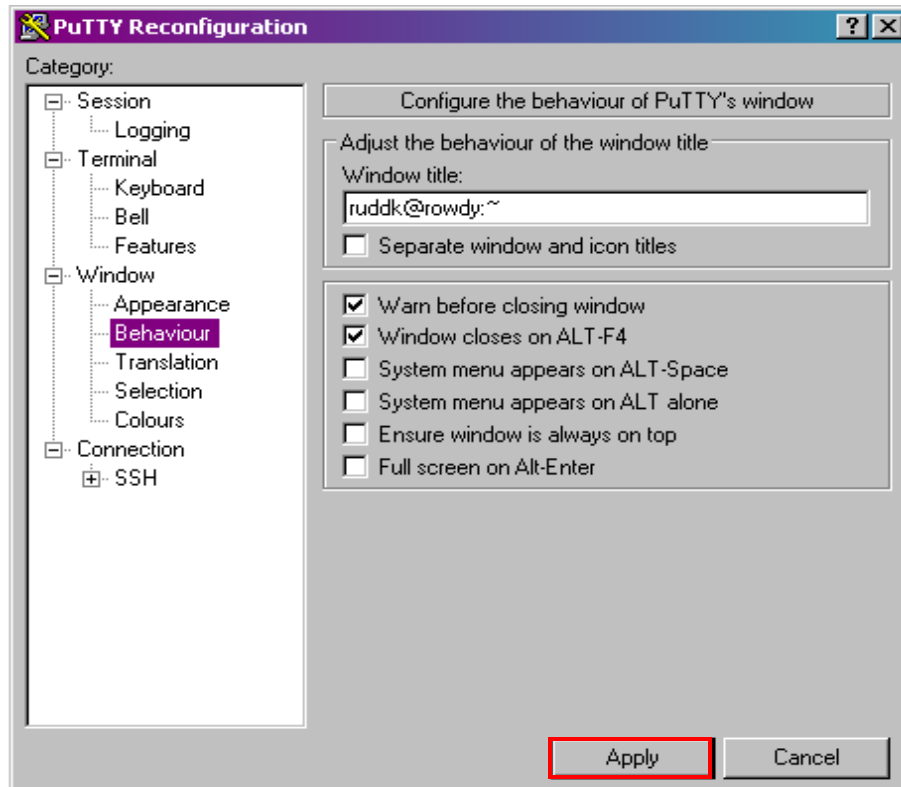
9. Window Appearance Options

You can set the cursor appearance to your preference, change the font to your preference, leave everything else alone.



Click on “**Behaviour**” in the Left Menu box for the next panel.

10. Window behaviour
You can set the options to your preference



Click “**Apply**” button to APPLY all your changes.

You will be brought back to the PuTTY session window. Continue with your Rowdy processing as normal. All the UNIX commands work as before. See the next page.

Go back to step 5 if you need to make more changes to the appearance and behavior of the session window.



METROPOLITAN STATE
COLLEGE of DENVER

Information Technology

11. Ongoing PuTTY Session Window

A screenshot of a PuTTY terminal window. The title bar reads 'ruddk@rowdy:~'. The terminal output shows a login sequence: 'login as: ruddk', 'ruddk@rowdy.mscd.edu's password:', and 'Last login: Thu Jul 23 10:28:31 2009 from 147.153.169.216'. This is followed by a welcome message: 'Welcome to Rowdy', 'Metropolitan State College of Denver, Information Technology', and a disclaimer: 'By logging into this system you agree to both the spirit and letter of MSCD's appropriate use statement. A copy of this is available in AD475. Unauthorized access to this system is prohibited'. The prompt '[ruddk@rowdy ~]\$' is followed by a green cursor block.

```
ruddk@rowdy:~  
login as: ruddk  
ruddk@rowdy.mscd.edu's password:  
Last login: Thu Jul 23 10:28:31 2009 from 147.153.169.216  
  
Welcome to Rowdy  
Metropolitan State College of Denver, Information Technology  
  
By logging into this system you agree to both the spirit and letter of  
MSCD's appropriate use statement. A copy of this is available in AD475  
Unauthorized access to this system is prohibited  
  
[ruddk@rowdy ~]$ █
```